



CAST IRON / DUCTILE IRON U-TYPE STRAINER (WITH QUICK OPENING COVER)

Model 3932



USE:

For water, air, sea water, steam, oil, etc

WORKING PRESSURE:

16 bar (232 psi) normal

TESTING PRESSURE:

Hydraulic test to BS6755:
Body: 1.5 x PN

COATING:

Fusion bonded epoxy coated internally and externally.

MATERIALS:

Body and cover

Gray Cast Iron to BS1452 grade 220 min.; Alt.
Ductile Iron BS2789

Clamp and Yoke

Ductile Iron to BS2789 grade 350/72 min.

Screen

Stainless steel to BS970 grade 316, or
grade 304

Flush-hole Plug

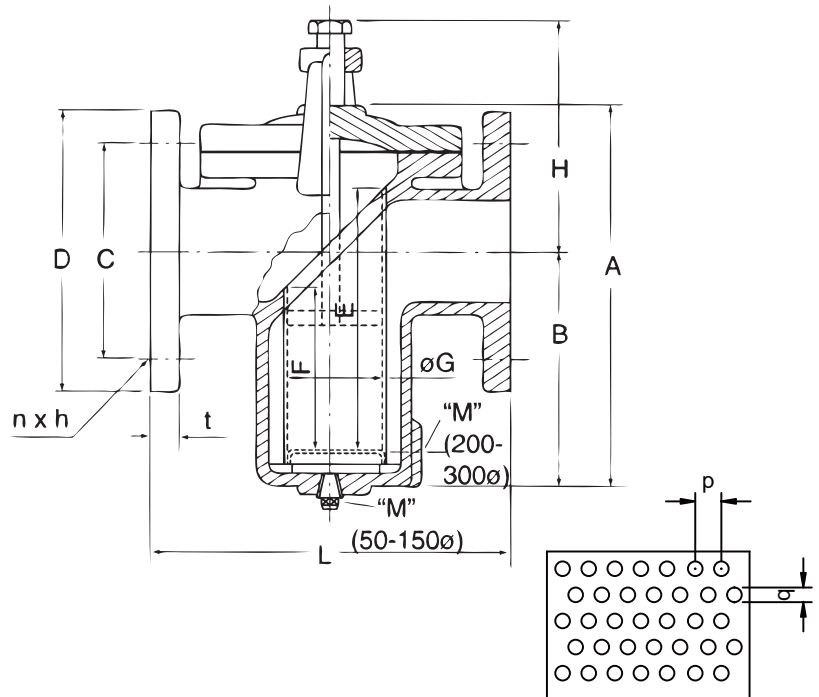
Malleable iron to BS6681 grade B30-60, or
bronze to BS1400 or stainless steel

Cover Studs and Nuts

Steel to BS4439; Alt stainless steel

Gasket

Sheet Fiber



DIMENSIONS:

SIZE	A	B	H	L	Flange to BS EN1092-PN16 (BS4504 PN16)					SCREEN					FLUSH-HOLE (M-NPT)
					ØD	ØC	n	Øh	t	E	F	Øg	p	Øq	
50	213	127	150	203	165	125	4	18	20	108	108	48	2.0	1.2	¾"
65	245	152	174	210	185	145	4	18	20	159	97	62	2.0	1.2	¾"
80	286	181	195	248	200	160	8	18	22	199	114	86	2.0	1.2	¾"
100	324	203	221	292	220	180	8	18	24	226	120	106	2.0	1.2	1"
125	372	222	253	333	250	210	8	18	26	251	126	125	2.0	1.2	1"
150	397	238	268	375	285	240	8	22	26	275	130	145	2.0	1.2	1¼"
200	524	298	346	470	340	295	12	22	30	368	178	191	4.5	3.0	¾"
250	622	349	406	511	405	355	12	26	32	433	192	241	4.5	3.0	¾"
300	756	416	488	667	460	410	12	26	32	533	234	298	4.5	3.0	1"

* All dimensions in mm.

* Optionally available with screen of other mesh size to order.

* Captive clamp & magnetic screen are available on request.

* Larger sizes are available on request

RIGHT IS RESERVED FOR DEVELOPMENT AND IMPROVEMENT IN DESIGN, MATERIALS, AND MANUFACTURING PROCESS.

PIPEMATE INTERNATIONAL LTD.