



CAST IRON DOUBLE DOOR NON-RETURN VALVES

Model 1420



USE:

All type of water handling systems of use with air, fresh water, sea water, oil, etc.

PRESSURE RATING:

16 bar, 25 Bar or 40 Bar

TESTING PRESSURE:

PN X 1.5 on body.

PN X 1.1 on seat.

COATING:

Fusion bonded epoxy coated internally and externally.

MATERIALS:

Body

High-graded Cast Iron BS1452 Gr.220 min. Alt.
Ductile Iron to BS EN 1563 (BS 2789)

Disc

Stainless Steel BS970 Gr.316

Hinge

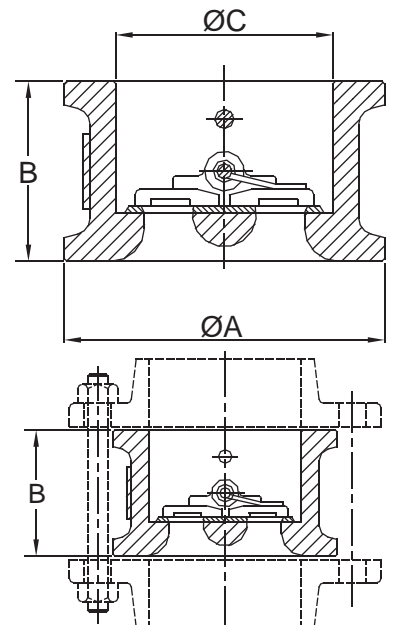
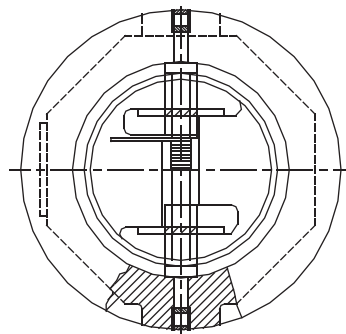
Stainless Steel BS970 Gr.316

Spring

Stainless Steel BS970 Gr.316

Seat

EPDM Alt. NBR



Bolting Arrangement

DIMENSIONS:

| | 50 | 65 | 80 | 100 | 125 | 150 | 200 | 250 | 300 | 350 | 400 | 450 | 500 | 600 |
|---|------|-----|------|-------|-----|-------|------|-----|-----|-----|-----|-----|-----|-----|
| A | 109 | 129 | 144 | 164 | 194 | 220 | 275 | 331 | 386 | 446 | 498 | 558 | 620 | 737 |
| B | 54 | 54 | 57.2 | 63.5 | 70 | 76.2 | 95.3 | 108 | 143 | 184 | 191 | 203 | 213 | 222 |
| C | 60.3 | 73 | 89 | 114.3 | 143 | 168.3 | 219 | 273 | 324 | 256 | 406 | 457 | 508 | 610 |

* All dimensions in mm.

* Larger sizes are available on request.